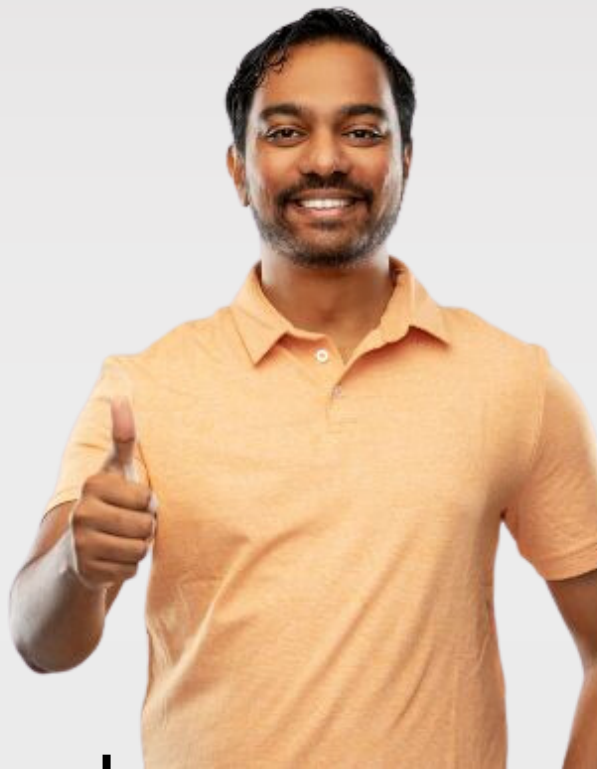


SLAM Based 3d Lidar Scanner

~~PRO METRON~~ *Light*



**Rapid and precise
3D scanning**

**Compact, portable,
LiDAR-powered**

www.metrontechlabs.com

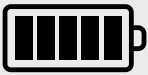


METRON X PRO

3D SLAM LIDAR

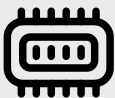


SPECIFICATION

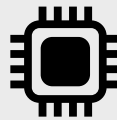


BATTERY

IVmount- 99Wh/6875mAh



INTERNAL MEMORY 1.8 TB



PROCESSOR

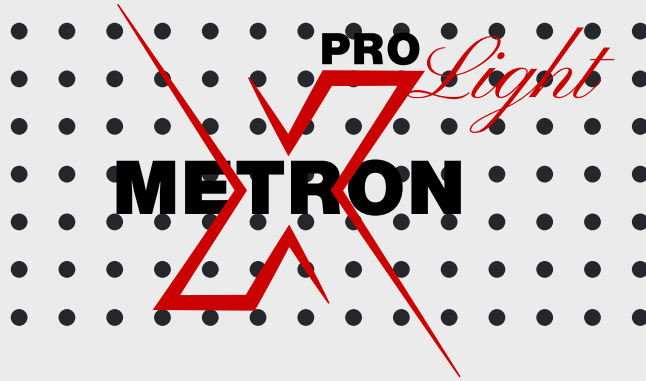
Intel



FIELD OF VIEW

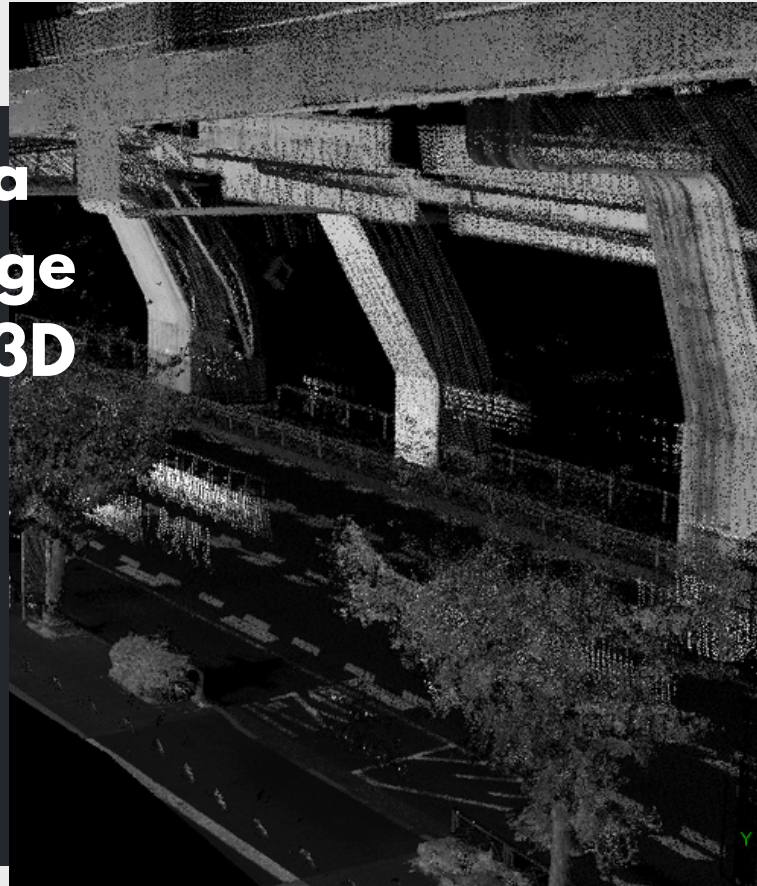
FOVHorizontal: 360°
Vertical: ~31° (-16° to +15°)

+91-8510000659
www.metrontechlabs.com



Metron X^{Pro Light} ensures a reliable 80-meter range for rapid and precise 3D scanning.

6,40,000 pts/sec



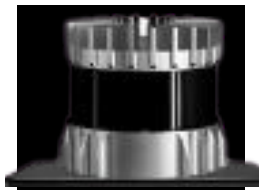
Laser Safety : Class 1 (IEC60825-1:2014)(Eye Safety)



WHAT'S IN THE BOX ?



Data Logger



Sensor



Battery - 1



Monopod



Carry Case



Charger

For More Information



+91-8510000659



www.metrontechlabs.com



A-83 Okhla -2 , New Delhi

Specification Sheet

IMU Performance Specifications:

Accelerometer:

- Calibration: Fully Calibrated
- Full Range: ± 10 g
- In-Run Bias Stability: 10 μ g (x, y), 15 μ g (z)
- Noise Density: 60 μ g/ \sqrt Hz
-

Gyroscope:

- Calibration: Fully Calibrated
- Full Range: ± 2000 deg/s
- In-Run Bias Stability: 8 deg/h
- Noise Density: 0.007 $^{\circ}$ /s/ \sqrt Hz
- Strapdown Integration (SDI): Yes

Functionality: Provides continuous estimation of position, velocity, and orientation by combining IMU data.

Magnetometer:

Integration: Onboard

Function: Assists with orientation and heading determination.

Barometer:

Integration: Onboard

Function: Provides altitude information to complement 3D positioning.

Sensor Specifications:

Scanning Method: Mechanical Rotation

Channel: 32

Range Capability: 80 m @ 10% reflectivity (all channels)

Range Accuracy: ± 2 cm

FOV (Horizontal): 360 $^{\circ}$

Resolution (Horizontal): 0.09 $^{\circ}$ (5 Hz), 0.18 $^{\circ}$ (10 Hz), 0.36 $^{\circ}$ (20 Hz)

Frame Rate: 5 Hz, 10 Hz, 20 Hz

Return Modes: Single Return (First, Last, Strongest), Dual Return, Triple Return

Mechanical/Electrical/Operational:

Wavelength: 905 nm

Laser Class: Class 1 Eye Safe

Dimensions: Height: 75.0 mm;

Top/Bottom: $\varnothing 89.0$ / $\varnothing 93.0$ mm

Power Consumption: 10 W

Note:

Specifications are subject to change. Please refer to the latest version.

PRO
METRON

Light